



House - Terraced

# STAFFORD CLOSE, CHAFFORD HUNDRED, GRAYS, RM16 6ND

PCM

£1,650

## FEATURES

- TWO BEDROOMS
- ONE RECEPTION ROOM
- DOUBLE GLAZED
- GAS CENTRAL HEATING
- OFF STREET PARKING
- FIRST FLOOR BATHROOM
- ENSUITE SHOWER ROOM
- REAR GARDEN



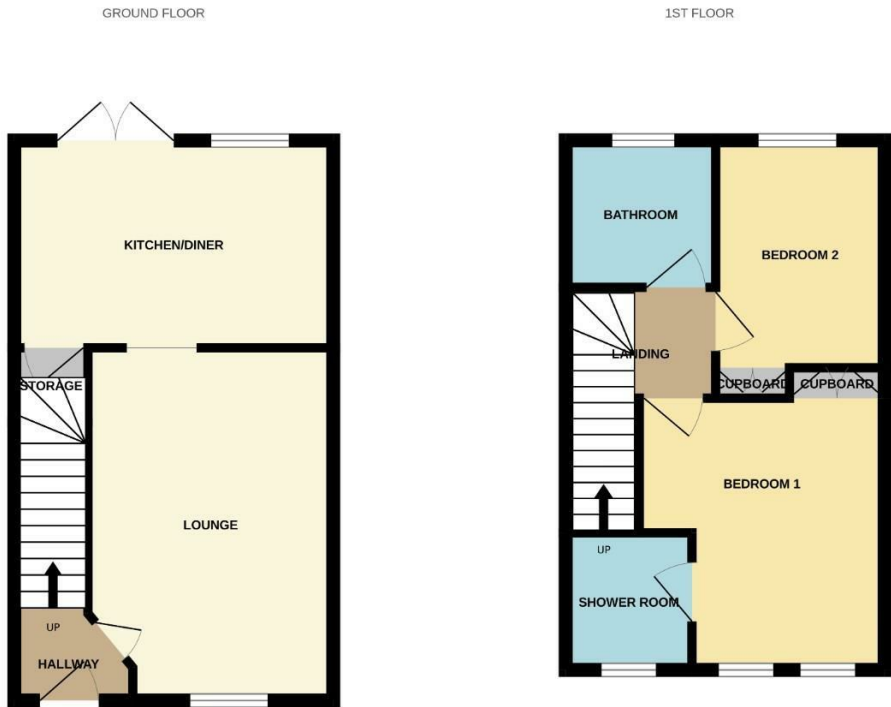
# 2 Bedroom House - Terraced located in Grays

Nestled in the desirable area of Stafford Close, Chafford Hundred, this charming terraced house presents an excellent opportunity for both first-time buyers and those seeking a comfortable home. Built between 1980 and 1989, the property boasts a classic design that harmoniously blends with its surroundings.

Upon entering, you will find a welcoming reception room that offers a perfect space for relaxation or entertaining guests. The house features two well-proportioned bedrooms, providing ample space for a small family or individuals who appreciate extra room for guests or a home office. The two bathrooms ensure convenience and privacy, catering to the needs of modern living.

The property also includes parking for one vehicle, a valuable asset in this sought-after location. Chafford Hundred is known for its community spirit and excellent amenities, including shops, schools, and parks, making it an ideal place to settle down.

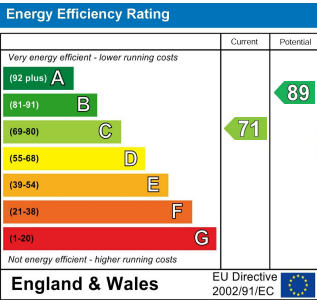
This terraced house is not just a home; it is a lifestyle choice, offering comfort and accessibility in a vibrant neighbourhood. With its appealing features and prime location, this property is sure to attract interest. Do not miss the chance to make this delightful house your new home.



Whilst every attempt has been made to ensure the accuracy of the floorplan contained here, measurements of doors, windows, rooms and any other items are approximate and no responsibility is taken for any error, omission or mis-statement. This plan is for illustrative purposes only and should be used as such by any prospective purchaser. The services, systems and appliances shown have not been tested and no guarantee as to their operability or efficiency can be given.  
Made with Metropix ©2025

Call us on  
**020 8593 5933**  
  
**dagenham@steps.me.uk**  
**www.steps.me.uk**

**Council Tax Band**  
**C**



Agents Note: Whilst every care has been taken to prepare these particulars, they are for guidance purposes only. All measurements are approximate and are for general guidance purposes only and whilst every care has been taken to ensure their accuracy, they should not be relied upon and potential buyers are advised to recheck the measurements.

STEPS

Estate Agents